

Triton Baffle Panel™

High Sound Absorbing Ceiling Baffles

Technical Data sheet



ASONA

Description.

Triton Baffle Panel™ is a vertical hanging high sound absorbing glass fibre ceiling baffle designed to control unwanted noise reverberation in large volume spaces. They can be direct fixed to lining or suspended and are available in range of widths, depths and lengths. The non-combustible glass fibre core is wrapped with a proprietary Sonatex™ 2 ply glass mat acoustic laminate that is available in white, black, wood look print and a range of colours.

Application.

Triton Baffle Panels™ are ideal for large volume spaces, showrooms, galleries, warehouses, hospitality etc.

Composition.

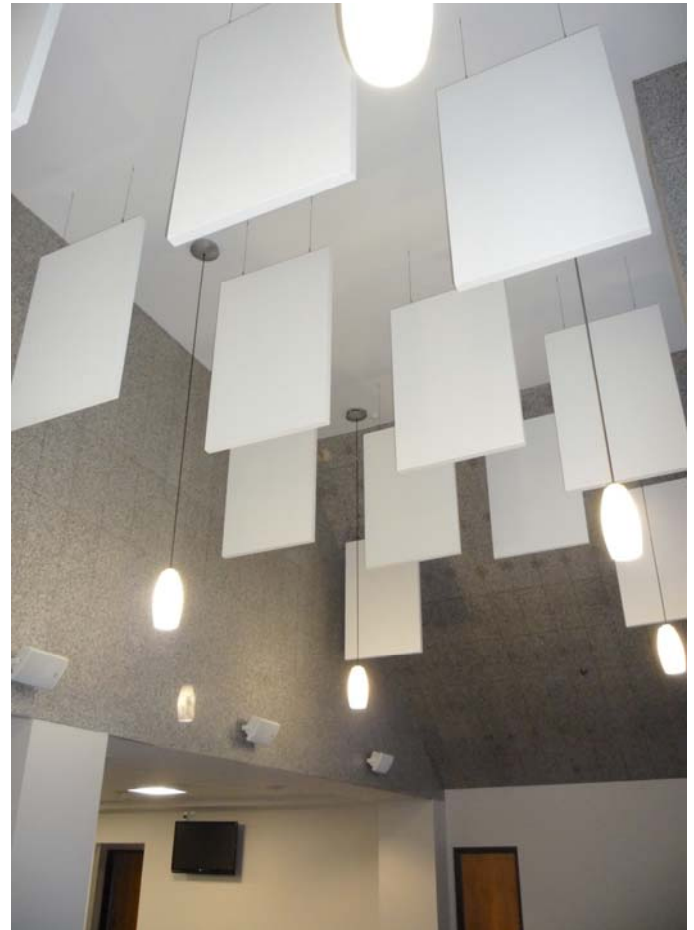
Made in NZ bio-soluble glass fibre core, laminated both sides with Sonatex™ with a steel / aluminium frame

Benefits.

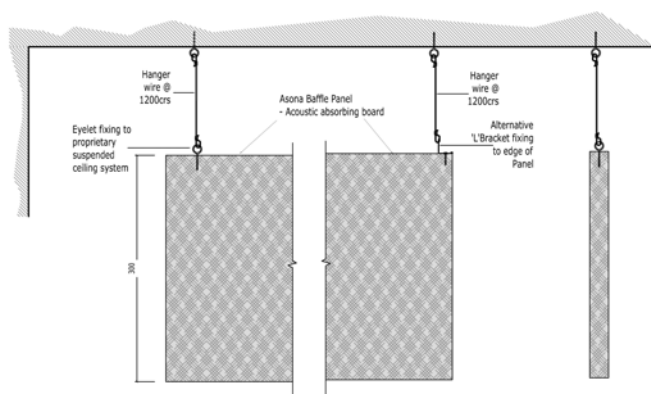
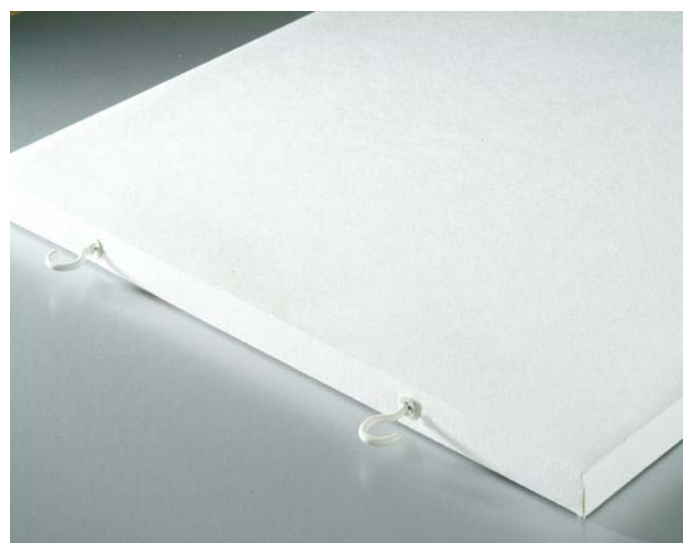
- Hanging panel design provides a clean floating look.
- High sound absorption rating for control of reverberation.
- 50 mm thick in a range of standard or custom depths up to 1200 mm.
- Light weight, non combustible, dimensionally stable
- Available white, black, grey, wood-grain print and colours
- Powder coated steel or aluminium frame.

Baffle Panels sizes:

Item #	Size (nominal) *	Edge
Large baffle panels, double sided with powder coated frame		
BP50.06.12	50 x 600 x 1200	Square
BP50.06.24	50 x 600 x 2400	Square
BP50.12.12	50 x 1200 x 1200	Square
BP50.12.18	50 x 1200 x 1800	Square
BP50.12.24	50 x 1200 x 2400	Square
BP50.12.30	50 x 1200 x 3000	Square



Auckland District Court



Technical Specifications

Sound absorption:

15 sabins per m²

Colour:

Sonatex: (White AS180) (Mid Grey RAL7040) (Light Grey RAL7030) (Grey White RAL9002) (Wood Wool Print) (Plaster Print) (Wood Print over RAL1014 Oak) (Wood Print over RAL1013 Blond) (Wood Print over RAL8019 Walnut) (Zinc Yellow RAL1018) (Ivory RAL1014) (Graphite Black RAL9011) (Traffic Red RAL3020) (Orient Red RAL3031) (Traffic Orange RAL2009) (Traffic Green RAL6032) (Aqua RAL6027) or (1963 White Glass Woven Fibre Fabric), other finishes to order.

Environmental impact:

Core from 80% recycled local waste glass, product and packaging can be reused/recycled in NZ. Low VOC <0.002 Mg/M²/hr per ASTM D5116

Fire Reaction:

Material group number: 1S
C/VM2 / ISO 5660.1. Suitable for fire exit way and all other sprinklered & non sprinklered buildings.

Humidity:

Max 99% R/H at 45°C.

Light reflectance:

ASTM C1477 LR-1, >75% White

Maintenance:

Clean with vacuum, soft brush or damp cloth. Re-surfacing of soiled panels available, consult Asona.

NZ Building Code:

Clause B2—durability, 5 years

Weight:

3 kg/m²

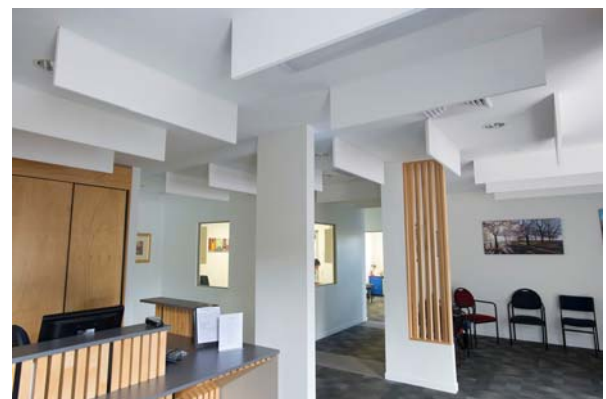
Installation:

Triton Baffle Panels™ are a finishing trade, installation shall not commence until the building is water tight, dry and free of dust and debris. Suspend on hanger wires. Space baffles evenly or as required by acoustical consultant.

Specification:

Acoustic panels shall be Triton Baffle Panel™ as manufactured and supplied by Asona Ltd Tel: 09 525 6575 Fax: 09 525 6579, item # (), size shall be () x ()mm, thickness shall be 50 x () x ()mm, NRC 0.95, finish shall be Sonatex 2 ply acoustic laminate in Sonatex: (White AS180), (White AS600), (White AS700) (Mid Grey RAL7040) (Light Grey RAL7030) (Grey White RAL9002) (Wood Wool Print) (Plaster Print) (Wood Print over RAL1014 Oak) (Wood Print over RAL1013 Blond) (Wood Print over RAL8019 Walnut) (Zinc Yellow RAL1018) (Ivory RAL1014) (Graphite Black RAL9011) (Traffic Red RAL3020) (Orient Red RAL3031) (Traffic Orange RAL2009) (Traffic Green RAL6032) (Aqua RAL6027) or (1963 White Glass Woven Fibre Fabric).

Panels shall be delivered to site with protective plastic film coating that is to be removed on installation. Suspend or direct fix panels to the structure using manufacturers approved fixings.



Marshlands Medical Centre

Asona Ltd

P.O Box 96-241 Balmoral,
Auckland, New Zealand
Sales: 09 525 6575
Email: info@asona.co.nz
Web: www.asona.co.nz

Factory:
Building 14, 7 Cain Road
Penrose
Auckland, New Zealand
Tel: (09) 525 6575
Fax: (09) 525 6579

ISO 9001:2008 Registered Firm No. NZ1014

© Copyright ASONA Ltd 2015
Asona, Triton Baffle Panel, Sonatex are trade marks of Asona Ltd
All dimensions are nominal. We reserve the right to change specifications.
Ref. TritonBafflePanel -1508