

Specifications

WIDTH: 160cm / 64" useable

COMPOSITION: 100% Polyester Weave

TYPE: Crepe Weave

ABRASION: 50,000 Martindale rubs

USE: Stretched Fabric Wall System

FLAMMABILITY: ASTM E 84-03 - Class 1

COLOURS:

STOCK

Black, Granada, Clouds, Oasis, Lime, Meblue.

INDENT

Citrus, Flame, Lemon, Mink, Amethyst, Magenta, China Sea, Midgrey, Planet, Ice Blue, Peppermint, Romano, Cornsilk, Spearmint, Orange, Electric, Waterfall, O-cha, Burnt Orange, Azure, Bramble, Cinnamon, Indigo, Forest, Camouflage, Wine, Shimmer, Ivory, Pearl, Acorn, Peach, Sand, Sahara, Dolphin, Apollo, Caramel, Nutmeg, Sangria, Brown, Algae, Peacock, Ruby, Mocca, Latte, Amarillo.

COLOUR VARIATIONS

All textiles are subject to some colour variation. Fabric supplied to customer order will be within commercial tolerance.

FABRIC CARE

Do not remove any part for separate cleaning. Protect from direct sunlight. Vacuum regularly using low suction.

Asona New Zealand

+64 9 525 6575

info@asona.co.nz

asona.co.nz

Asona Australia

1800 240 361

info@asona.com.au

asona.com.au

© Copyright ASONA Ltd 2018.

Asona, Sonatex, Sonaris, Sonawood, Premier Pinboard, Kurawall, Triton: Duo, Hygiene, Baffle Beam, Fabwall, Sports, Trio, Cloud, Sound Shapes are trademarks of Asona Ltd. All dimensions shown are nominal. Print and perforation patterns are not to scale. Information given is correct from date of printing. We reserve the right to change specifications. Colour accuracy may vary according to printer and stock used.

NZ Patent No. NZ2009208100 / AU Patent No. AU570507

AUG2018

Wall covering fabric selection

FOR THE
ASONA KURAWALL™ SYSTEM



asona



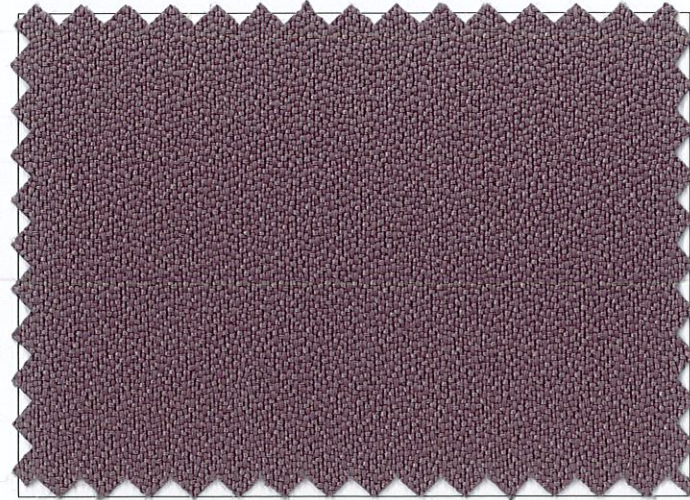
asona

A selection of in-house fabrics

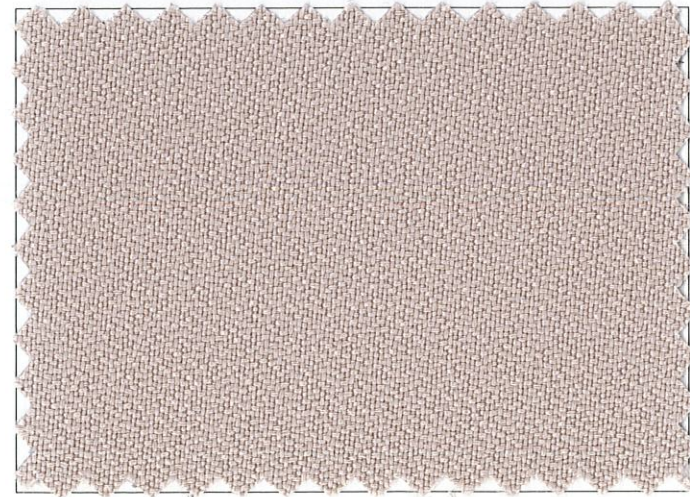
Designed to work with the Asona Kurawall™ education wall system and immediately available.



ASONA CHARCOAL • WIDTH: 160CM • COMPOSITION: 100% POLYESTER



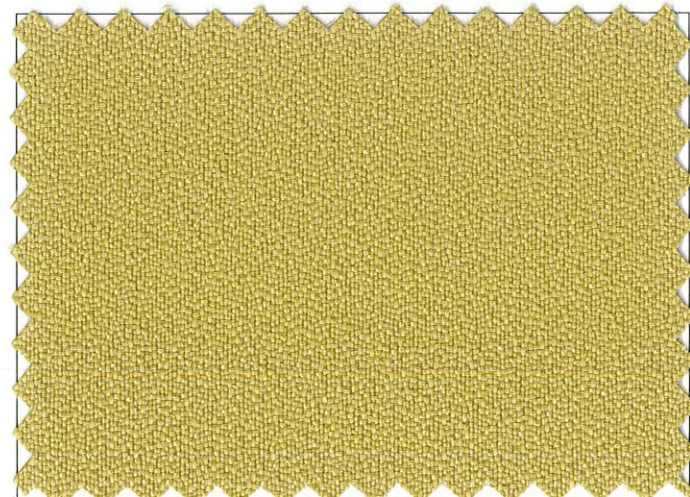
ASONA GRANADA TP126 • WIDTH: 160CM • COMPOSITION: 100% POLYESTER



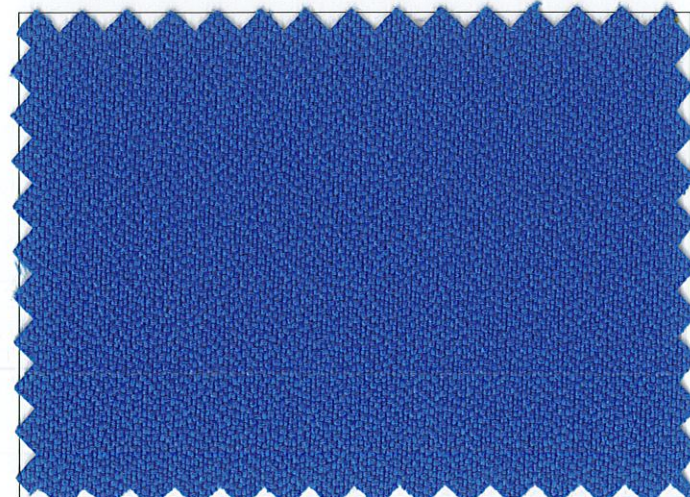
ASONA CLOUDS TP188 • WIDTH: 160CM • COMPOSITION: 100% POLYESTER



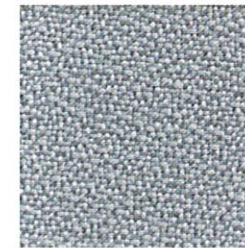
ASONA OASIS TP114 • WIDTH: 160CM • COMPOSITION: 100% POLYESTER



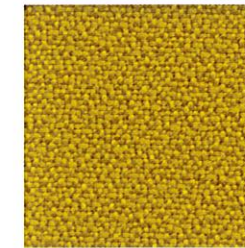
ASONA LIME TP103 • WIDTH: 160CM • COMPOSITION: 100% POLYESTER



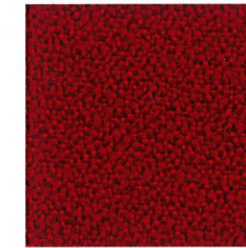
ASONA MEBLUE TP191 • WIDTH: 160CM • COMPOSITION: 100% POLYESTER



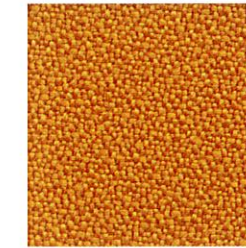
CLOUDS-TP188



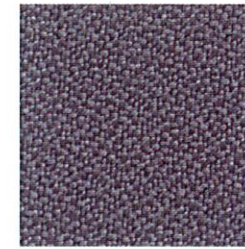
CITRUS-TP105



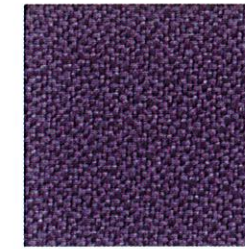
FLAME-TP123



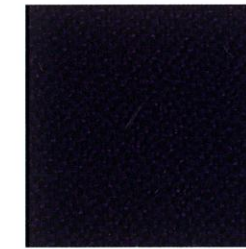
LEMON-TP151



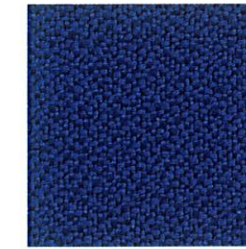
MINK-TP122



AMETHYST-TP186



MAGENTA-TP156



CHINA SEA-TP163



GRANADA-TP126



MID GREY-TP192



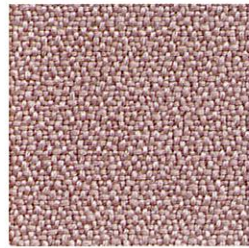
PLANET-TP150



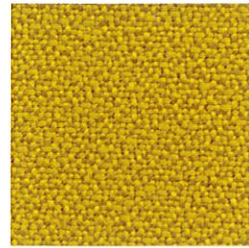
BLACK-TP137

A selection of indent fabrics

Designed to work with the Asona Kurawall™ education wall system and available by pre-order.



SHIMMER-TP190



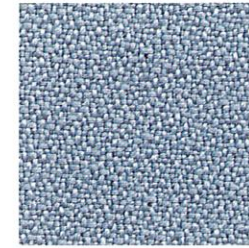
IVORY-TP185



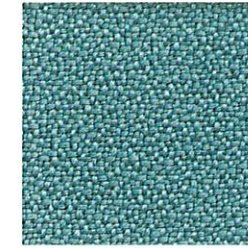
PEARL-TP187



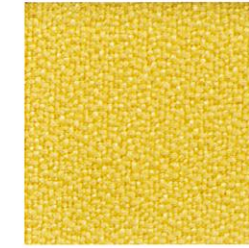
ACORN-TP128



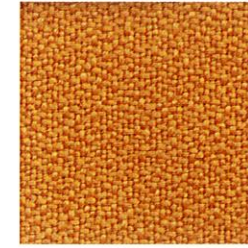
BLUE-TP160



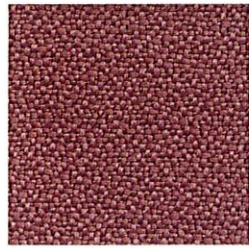
PEPPERMINT-TP107



ROMANO-TP145



CORNSILK-TP182



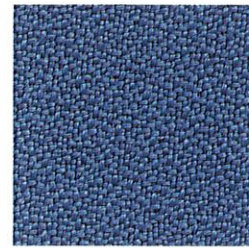
PEACH-TP189



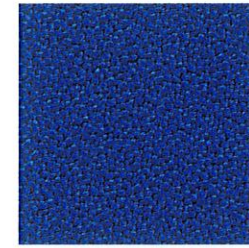
SAND-TP127



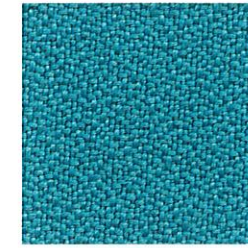
SAHARA-TP140



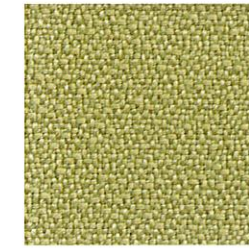
DOLPHIN-TP161



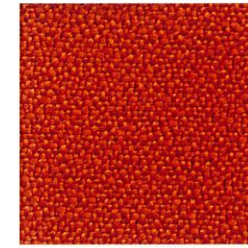
MEBLUE-TP191



SPEARMINT-TP102



LIME-TP103



DIEGO ORANGE-TP181



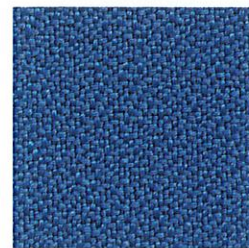
APOLLO-TP131



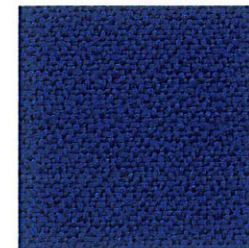
CARAMEL-TP132



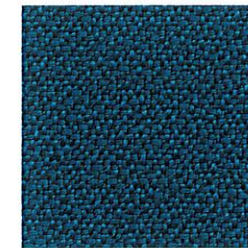
NUTMEG-TP141



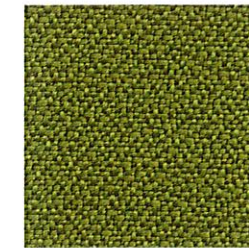
DOLPHIN-TP164



ELECTRIC-TP162



WATERFALL-TP108



O-CHA-TP115



BURNT ORANGE-TP149



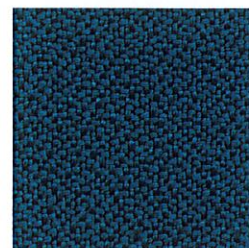
SANGRIA-TP148



BROWN-TP146



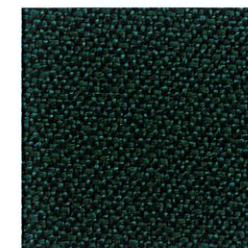
ALGAE-TP119



PEACOCK-TP101



AZURE-TP169



BRAMBLE-TP116



OASIS-TP114



CINNAMON-TP157



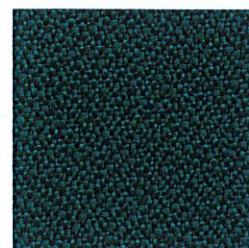
RUBY-TP152



MOCCA-TP154



LATTE-TP153



AMARILLO-TP112



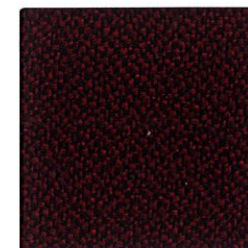
INDIGO-TP174



FOREST-TP117



CAMOUFLAGE-TP118



WINE-TP194