

Stratopanel™

Perforated Plasterboard Acoustic Ceiling & Wall Lining

Technical Data sheet



asona

Description.

Stratopanel™ is the new name for Cleaneo and incorporates Cleaneo technology. Manufactured with high quality, ultra-sharp perforations in a variety of continuous perforated patterns for a seamless finish. It is the World's first acoustic wall and ceiling lining with built-in air purification.

Application.

Stratopanel with Cleaneo technology meets the high level of acoustic performance required for commercial public areas such as offices, retail centres, schools, hospitals, conference halls and hospitality spaces.

Composition.

Panels manufactured from reinforced plasterboard containing dehydrated zeolite and gypsum with grey sound absorption felt fixed on the back. Perforations press punched for clean edge finish.

Benefits.

- Seamless to edge finish.
- Good sound absorption for control of reverberation.
- Fire resistant gypsum composition.
- Wide range of perforation patterns.
- World's first acoustic wall and ceiling lining with built-in air purification.
- Durable acoustic finish, easy to re-paint and maintain long term.
- FF edge leads to stronger joins and less filler required.

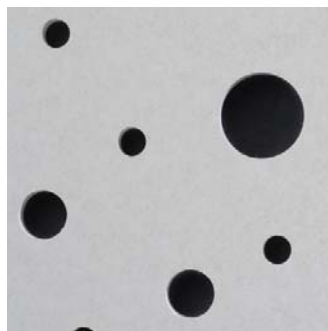
Technical Specifications



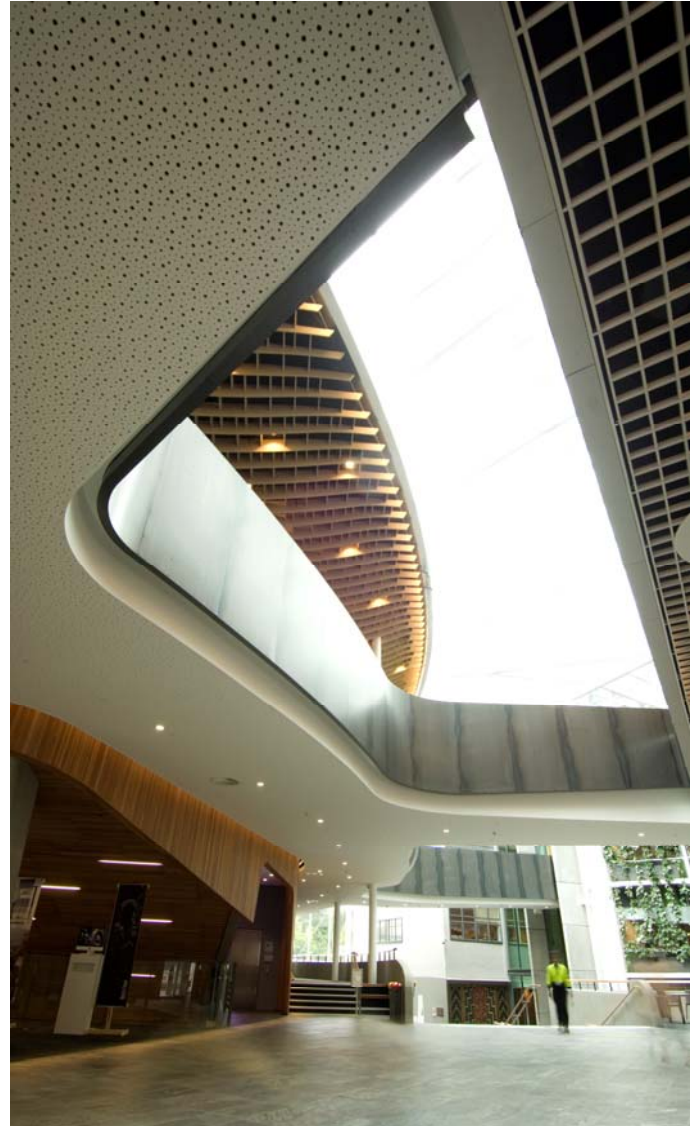
Stratopanel Random Plus G8/15/20 R—FF



G8/15/20



G12/20/35



Sir Paul Reeves Building, AUT



Technical Specifications

Surface:

Untreated ready for painting.

Environmental:

The gypsum boards are made from: naturally occurring gypsum, gypsum by-products at local power plants, pre-consumer recycled gypsum waste produced through production processes and post-consumer recycled gypsum. product and packaging can be recycled in NZ. Low VOC

Sizes:

Stratopanel™ 8/15/20—13x 1200 x 1875mm (in stock).
Stratopanel™ 12/20/35—13x 1200 x 1875mm (by indent).

Fire Reaction:

C/VM2 / ISO 5660.1, Group number 1S

Installed Conditions:

Max 90% R/H at 30°C.

Light reflectance:

73% DIN 5036 pt 3 White

Limitation:

Not for use with negative air return plenums, in direct contact with moisture or in extreme humidity conditions.

Loading:

Maximum weight that can be directly integrated into the ceiling eg: lighting, A/C grill, speakers etc, shall not exceed 3kg. Greater weights shall be independently supported.

Maintenance:

Dust is removed using a dry duster or vacuum cleaner. Removal of marks depends on the paint used on site, although a damp cloth using normal cleaning practices and neutral cleaning solutions is normally suitable for minor marks.

Robustness:

Made of robust, glass fibre reinforced material with excellent pressure resistance and can therefore be used on walls as well as ceilings. Under normal conditions of use, the product properties are preserved and there is no decomposition of material over time.

NZ Building Code:

Clause B2—durability, 5 years

Weight:

Perforated: 9.3—10.5 kg/m²

Installation:

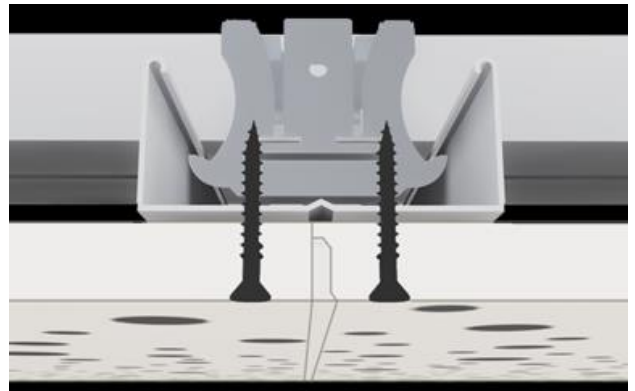
Suspension must be a full suspended system comprising of strong backs at 900 mm centres, battens at 300mm centres. (Note - direct fix clips to purlins are not permitted). For walls install on metal battens or studs at 300 mm centres. Screw fix panels at 300mm c/c in field of panel and 200mm c/c at panel edge, use buglee head screws. Butt joint panels and plaster with Uniflott and finish compound.

Specification:

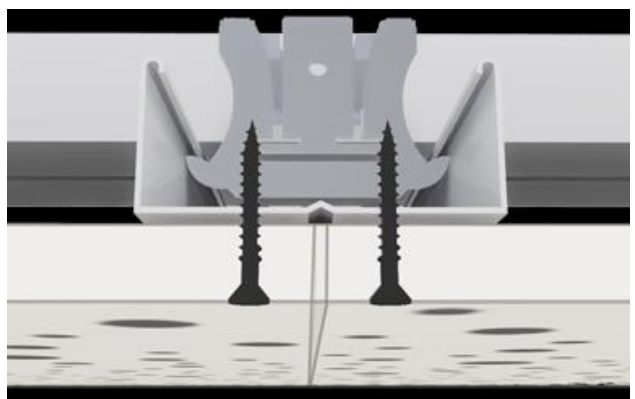
Acoustic lining shall be Stratopanel™ perforated acoustical gypsum panel system, supplied by Asona Ltd, Tel: 09 525 6575, Fax: 09 525 6579. Type (x), perforation pattern: Random Plus (8/15/20/R)(12/20/35) press punched with grey/white acoustic tissue backer, sound absorption α_w 0.60, NRC 0.45 - 0.50, screw fix ceiling panels to furring at 300mm c/c, strong back at 1200mm c/c with hangers at 1200 mm c/c.



Edges:



Edge FF (no visible joints = pre-set joint size)



Edge SK (no visible joints =square edge for expressed or custom joints)

Asona Ltd

P.O Box 96-241 Balmoral,
Auckland, New Zealand
Sales:09 525 6575
Email: info@asona.co.nz
Web: www.asona.co.nz

Factory:
Building 14, 7 Cain Road
Penrose
Auckland, New Zealand
Tel: (09) 525 6575
Fax: (09) 525 6579

© Copyright ASONA Ltd 2018
Asona, is a trade mark of Asona Ltd. Stratopanel, Cleaneo are trademarks of Knauf Danoline.com All dimensions are nominal. We reserve the right to change specifications without notice. Ref. Stratopanel_1804