

Sonatex™

Acoustic Laminates

Data sheet

Description.

Sonatex™ is a proprietary composite glass mat acoustic laminate designed as a decorative finish to sound absorbing ceiling and wall panels. Sonatex™ provides a flat durable finish and is available in 3 whites, RAL colours, prints and perforated designs. Sonatex™ is manufactured in NZ, is light weight, non combustible, low in embodied energy, low VOC, easily customized and economical .

Application.

Sonatex™ is designed to provide a decorative acoustically transparent laminate finish to a broad range of ceiling & wall materials such as polyester, mineral fibre, glass fibre board, rockwool, and plasterboard. Panels can be provided at NRC 0.1 to 1.00 and CAC from 15 to 45dB. Perforation options have a dual layer structure, colours or wood prints can be added for effect but white on white remains the most popular option giving a subtle textural finish to white ceilings.

Composition.

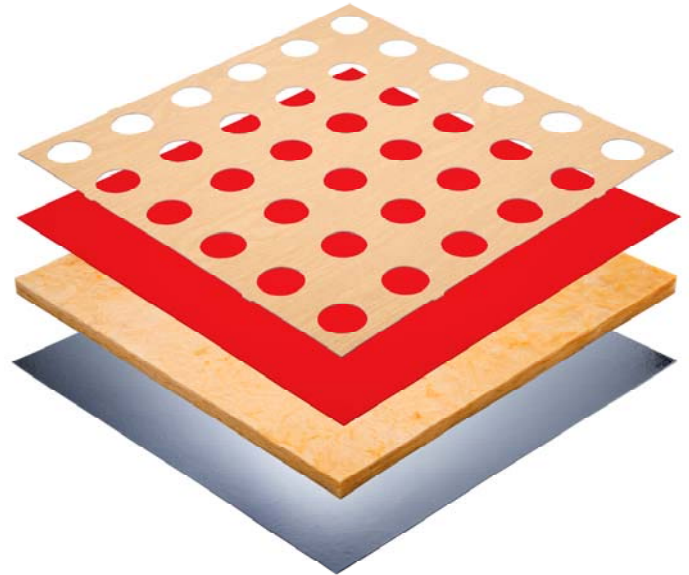
Made in NZ, Sonatex™ is a glass mat composite material.

Benefits.

- Acoustically transparent.
- Produces an attractive aesthetic to acoustic ceiling panels.
- Group 1S Fire Rating—non combustible, suitable for all areas including corridors and fire exits.
- GreenTag Certified when laminated to Triton panels.
- Stock colours & custom RAL colours available to order.
- Selection of wood print effects available.
- Custom sizes and special perforation designs available to order.
- Sonatex has light diffusing properties when formed into AO-Gami shapes.
- Low in embodied energy and low VOC.
- Economical perforated finishes are lower cost vs perforated metal, MDF, Ply or plasterboard.
- Manufactured in NZ



asona



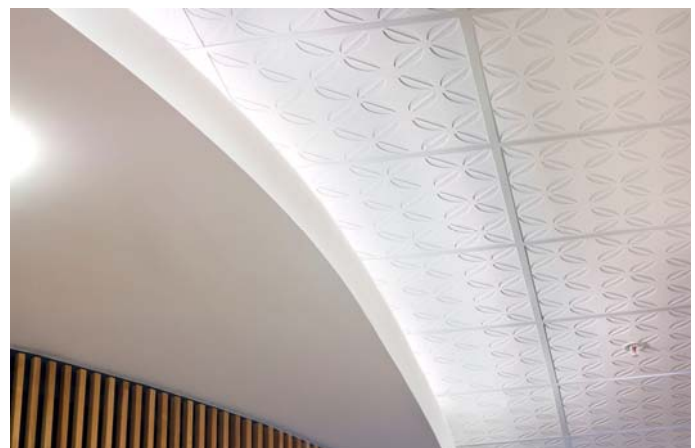
- Example: Multi-ply Sonatex P55 perforated wood grain print Sonatex over Red Sonatex onto a 15mm glass fibre ceiling panel with foil backing.



Triton Duo 35 panels with Wood Grain print Sonatex facing



Triton Cloud 50 with Sonatex RAL 7040 Grey facing



Triton 25 with Sonatex FP-100 perforated white on white facing

Sonatex™

Acoustic Laminates

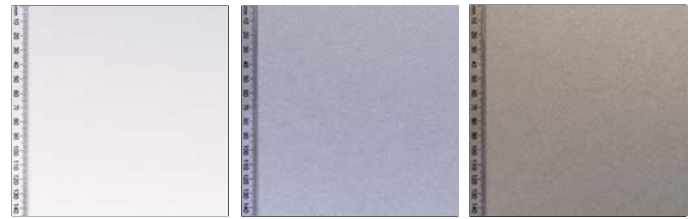
Data sheet



asona



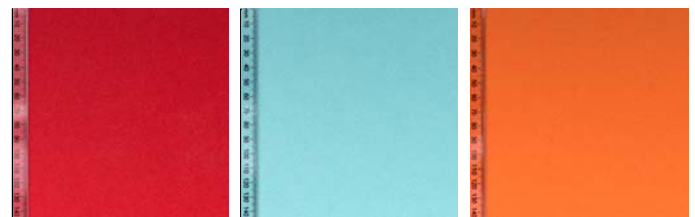
Triton 50 with Sonatex S4-500 perforated white on white facing.



Selection of Sonatex whites and greys available.



Triton 25, 50 & 75 panels with coloured Sonatex facings.



Selection of Sonatex RAL colours available.



Selection of effect prints available.



Triton Baffle Beams with Wood Grain print Sonatex facing.



Selection of standard perforations available.



AO-Gami formed from white Sonatex.



Asona Ltd
 P.O Box 96-241 Balmoral,
 Auckland, New Zealand
 Sales: 09 525 6575
 Email: info@asona.co.nz
 Web: www.asona.co.nz

Factory:
 Building 14, 7 Cain Road
 Penrose
 Auckland, New Zealand
 Tel: (09) 525 6575
 Fax: (09) 525 6579

ISO 9001:2008 Registered Firm No. NZ1014

© Copyright ASONA Ltd 2016
 Asona, Triton, Sonatex are trade marks of Asona Ltd
 All dimensions are nominal. We reserve the right to change specifications.
 Ref. Sonatex 1605. Patent No. NZ2009208100 Patent No. AU570507