

Stratopanel™

Perforated Plasterboard Acoustic Ceiling & Wall Lining

Technical Data sheet



asona

Description.

Stratopanel™ is the new name for Cleaneo and incorporates Cleaneo technology. Manufactured with high quality, ultra-sharp perforations in a variety of continuous perforated patterns for a seamless finish. It is the World's first acoustic wall and ceiling lining with built-in air purification.

Application.

Stratopanel with Cleaneo technology meets the high level of acoustic performance required for commercial public areas such as offices, retail centres, schools, hospitals, conference halls and hospitality spaces.

Composition.

Panels manufactured from reinforced plasterboard containing dehydrated zeolite and gypsum with grey sound absorption felt fixed on the back. Perforations press punched for clean edge finish.

Benefits.

- Seamless to edge finish.
- Good sound absorption for control of reverberation.
- Fire resistant gypsum composition.
- Wide range of perforation patterns.
- World's first acoustic wall and ceiling lining with built-in air purification.
- Durable acoustic finish, easy to re-paint and maintain long term.
- FF edge leads to stronger joins and less filler required.

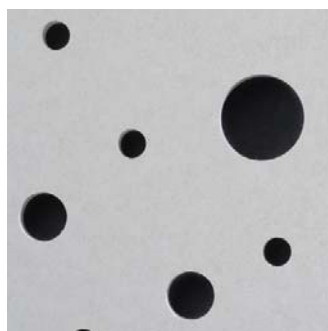
Technical Specifications



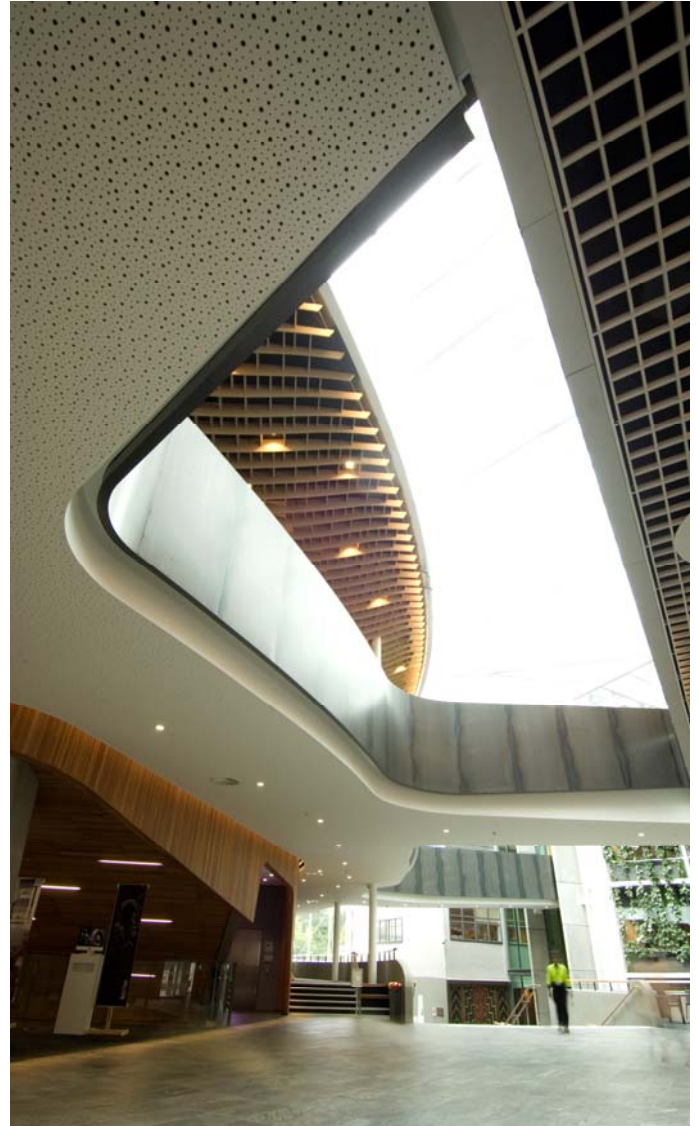
Stratopanel Random Plus G8/15/20 R—FF



G8/15/20



G12/20/35



Sir Paul Reeves Building, AUT



Technical Specifications

Surface:

Untreated ready for painting.

Environmental:

The gypsum boards are made from: naturally occurring gypsum, gypsum by-products at local power plants, pre-consumer recycled gypsum waste produced through production processes and post-consumer recycled gypsum. product and packaging can be recycled in NZ. Low VOC

Sizes:

Stratopanel™ 8/15/20—13x 1200 x 1875mm
Stratopanel™ 12/20/35—13x 1200 x 1875mm

Fire Reaction:

C/VM2 / ISO 5660.1, Group number 1S

Installed Conditions:

Max 90% R/H at 30°C.

Light reflectance:

73% DIN 5036 pt 3 White

Limitation:

Not for use with negative air return plenums, in direct contact with moisture or in extreme humidity conditions.

Loading:

Maximum weight that can be directly integrated into the ceiling eg: lighting, A/C grill, speakers etc, shall not exceed 3kg. Greater weights shall be independently supported.

Maintenance:

Dust is removed using a dry duster or vacuum cleaner. Removal of marks depends on the paint used on site, although a damp cloth using normal cleaning practices and neutral cleaning solutions is normally suitable for minor marks.

Robustness:

Made of robust, glass fibre reinforced material with excellent pressure resistance and can therefore be used on walls as well as ceilings. Under normal conditions of use, the product properties are preserved and there is no decomposition of material over time.

NZ Building Code:

Clause B2—durability, 5 years

Weight:

Perforated: 9.3—10.5 kg/m²

Installation:

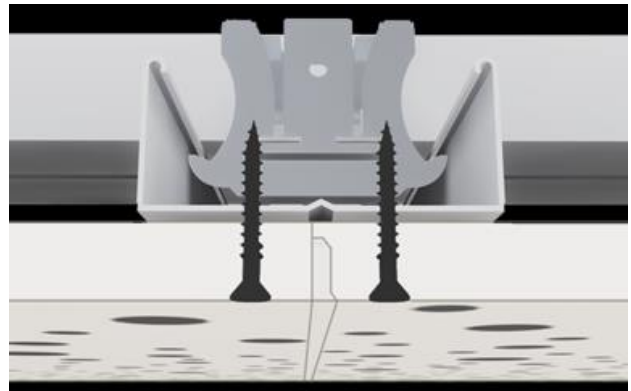
Shall not commence until the building is water tight and dry. Ceilings - install strong backs at 1200 mm centres, furring at 300mm centres. Walls - install on furring or studs at 300 mm centres. Screw fix panels at 300mm c/c in field of panel and 200mm c/c at panel edge, use bulge head screws. Butt join panels and plaster with Uniflott.

Specification:

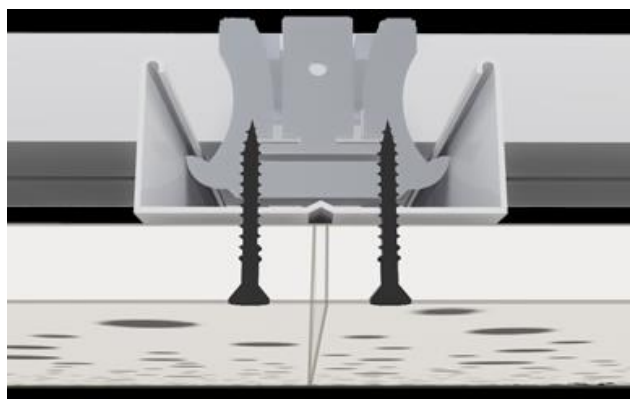
Acoustic lining shall be Stratopanel™ perforated acoustical gypsum panel system, supplied by Asona Ltd, Tel: 09 525 6575, Fax: 09 525 6579. Type (_x_), perforation pattern: Random Plus (8/15/20/R)(12/20/35) press punched with grey/white acoustic tissue backer, sound absorption ΔW 0.60, NRC 0.50-0.80, screw fix ceiling panels to furring at 300mm c/c, strong back at 1200mm c/c with hangers at 1200 mm c/c.



Edges:



Edge FF (no visible joints = pre-set joint size)



Edge SK (no visible joints =square edge for expressed or custom joints)

Asona Ltd

P.O Box 96-241 Balmoral,
Auckland, New Zealand
Sales:09 525 6575
Email: info@asona.co.nz
Web: www.asona.co.nz

Factory:
Building 14, 7 Cain Road
Penrose
Auckland, New Zealand
Tel: (09) 525 6575
Fax: (09) 525 6579

© Copyright ASONA Ltd 2016
Asona, is a trade mark of Asona Ltd. Stratopanel, Cleaneo are trademarks of Knauf Danoline.com All dimensions are nominal. We reserve the right to change specifications without notice. Ref. Stratopanel_1604

Solopanel™

Continuous Perforated Acoustic Ceiling & Wall Lining

Technical Data sheet



asona

Description.

Solopanel™ a continuous to-the-edge perforated acoustic ceiling system designed for auditoriums, atriums and large public spaces. Panels are manufactured from press punched perforated plaster board with plastered joins. Panels are screw fixed to battens for a monolithic finish. Now incorporated with an air purification feature, Cleaneo Technology across the full Knauf-Danoline range of perforated acoustic plasterboard ceiling & wall finishes.

Application.

Solopanel™ is ideal for large volume areas where a seamless fluid look is required, perfect for strong sculptural architecture.

Composition.

Panels manufactured from reinforced plasterboard with grey sound absorption felt fixed on the back. Perforations press punched for clean edge finish.

Benefits.

- Continuous perforations for a seamless monolithic look.
- Good sound absorption for control of reverberation.
- Fire resistant gypsum composition.
- Wide range of perforation patterns.
- Ideal for large volume areas
- Durable acoustic finish, easy to re-paint and maintain long term.

Technical Specifications

Practical Sound Absorption Coefficients: αW 0.60; Class C; ISO 354 E-200. NRC 0.60 per ASTM C423							
	Hz	125	250	500	1000	2000	4000
G8/18	αp	0.45	0.60	0.70	0.60	0.55	0.60
G10/23	αp	0.45	0.60	0.65	0.60	0.55	0.60
G12/25	αp	0.45	0.65	0.75	0.65	0.60	0.65
G15/30	αp	0.45	0.65	0.75	0.65	0.60	0.65
G12/20/66	αp	0.45	0.65	0.80	0.65	0.50	0.65

Sizes:

G8/18	FF: 1188x1998mm	MF: 1188x1998mm
G10/23	FF: 1196x2001mm	MF: 1196x2001mm
G12/25	FF: 1200x2000mm	MF: 1200x2000mm
G15/30	FF: 1188x1998mm	
G12/20/66	FF: 1188x1980mm	MF: 1188x1980mm

Perforations:

G8/18	(ø8mm @ 18oc)
G10/23	(ø10mm @ 23oc)
G12/25	(ø12mm @ 25oc)
G15/30	(ø8mm @ 18oc)
G12/20/66	(ø12mm @ 20oc, alternating perforation)



ASB North Wharf Branch, AKLD



Technical Specifications

Colour:

Raw finish for painting.

Environmental:

The gypsum boards are made from following gypsum types: naturally occurring gypsum, gypsum produced from by-products at local power plants during desulphurisation, pre-consumer recycled gypsum waste produced through production processes and post-consumer recycled gypsum. Low embodied energy, product and packaging can be recycled in NZ. Low VOC

Fire Reaction:

C/VM2 / ISO 5660.1, Group number 1S

Installed Conditions:

Max 90% R/H at 30°C.

Light reflectance:

73% DIN 5036 pt 3, White

Limitation:

Not for use with negative air return plenums, in direct contact with moisture or in extreme humidity conditions.

Loading:

Maximum weight that can be directly integrated into the ceiling eg: lighting, A/C grill, speakers etc, shall not exceed 3kg. Greater weights shall be independently supported.

Maintenance:

Clean with damp cloth.

NZ Building Code:

Clause B2—durability, 5 years

Weight:

Perforated: 8.5 kg/m²

Installation:

Shall not commence until the building is water tight and dry. Ceilings - install strong backs at 1200 mm centres, furring at 300mm centres. Walls - install on furring or studs at 300 mm centres. Screw fix panels at 300mm c/c in field of panel and 200mm c/c at panel edge, use bulge head screws. Butt join panels and plaster with Uniflott.

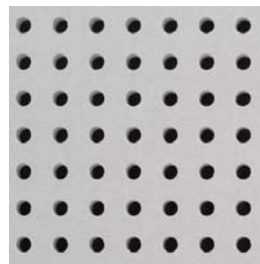
Specification:

Acoustic lining shall be Solopanel™ perforated acoustical gypsum panel system, supplied by Asona Ltd, Tel: 09 525 6575, Fax: 09 525 6579.

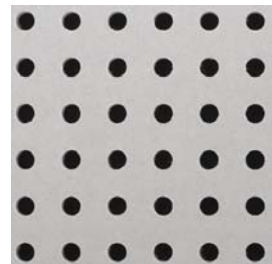
Type G8/18 FF: 1188x1998mm, G10/23 FF: 1196x2001mm, G12/25 FF: 1200x2000mm, G15/30 FF: 1188x1998mm, G12/20/66 FF: 1188x1980mm Q8/18 FF: 1188x1998mm, perforation pattern (G8/18)(G10/23)(G12/25)(G15/30)(G8/12/50)(G12/20/66)(Q8/18) mm diameter press punched with grey/white acoustic tissue backer, sound absorption α_w 0.60, NRC 0.55-0.80, screw fix ceiling panels to furring at 300mm c/c, strong back at 1200mm c/c with hangers at 1200 mm c/c.



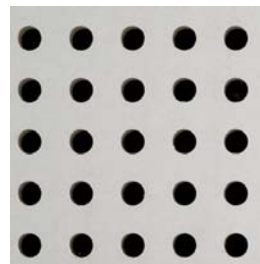
ASB North Wharf Branch, AKLD



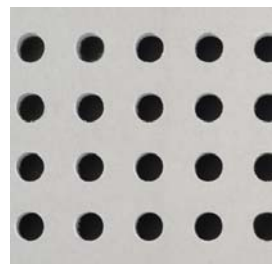
G8/18



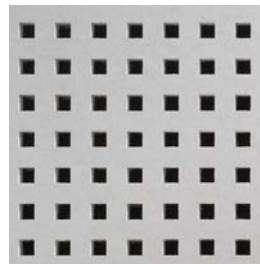
G10/23



G12/25



G15/30



Q8/18

Asona Ltd

P.O Box 96-241 Balmoral,
Auckland, New Zealand
Sales: 09 525 6575
Email: info@asona.co.nz
Web: www.asona.co.nz

Factory:

Building 14, 7 Cain Road
Penrose
Auckland, New Zealand
Tel: (09) 525 6575
Fax: (09) 525 6579

Designpanel™

Perforated Plasterboard Acoustic Lining

Technical Data sheet



ASONA

Description.

Designpanel™ is a high quality press punch perforated plasterboard acoustic sheet lining for ceiling and walls. Designpanel™ is available in 1200 x 2400 mm (M2F,G2F,Q2F), 900 x 2400mm (T3L1, T3L2), 900 x 2700 (G1F,M1F,Q1F) and Tangent 14 x 4mm oval, Micro 3 x 3mm, Quadril 12 x 12mm and Globe 6mm diameter perforations in square or linear clusters. Panels are tapered edge 4 sides for superior plastering to a smooth monolithic finish. Panels painted with fine nap roller. Now incorporated with an air purification feature, Cleaneo Technology across the full Knauf-Danoline range of perforated acoustic plasterboard ceiling & wall finishes.

Application.

Designpanel™ is the ideal lining to control unwanted noise reverberation where a seamless, monolithic aesthetic is desired. Libraries, malls, halls, receptions, retail, civic buildings, galleries

Composition.

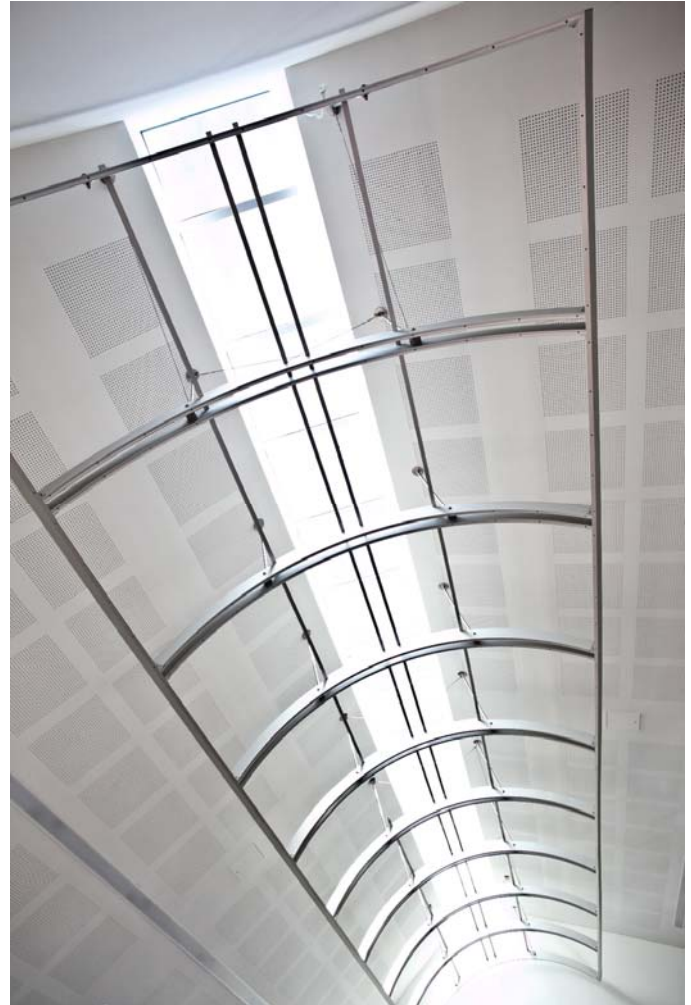
Panels manufactured from paper faced high grade reinforced natural gypsum with sound absorption felt fixed on the back.

Benefits.

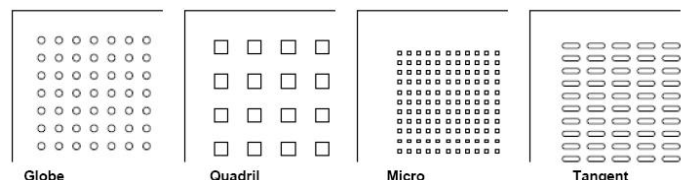
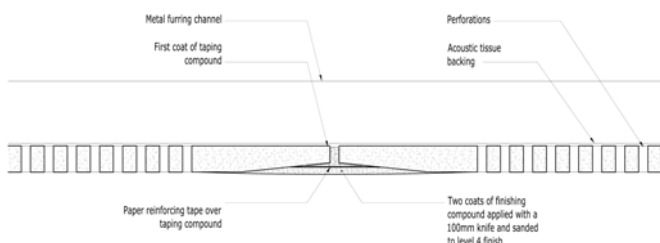
- 4 sides tapered and plastered for a monolithic aesthetic.
- Perforations are press punched for a superior clean monolithic finish.
- Good sound absorption for control of reverberation noise.
- Durable finish, easy to repaint and repair.
- Ideal for a healthy comfortable indoor environment.
- Air purification feature, Cleaneo Technology

Technical Specifications

Practical Sound Absorption Coefficients: ISO 354 E-200 with 50 mm x 22 kg/m ³ glass wool overlay							
	Hz	125	250	500	1000	2000	4000
T3L1	α _p	0.45	0.70	0.80	0.70	0.70	0.80
M2F	α _p	0.55	0.60	0.60	0.50	0.50	0.50
Q2F	α _p	0.45	0.65	0.60	0.60	0.55	0.45
G2F	α _p	0.50	0.80	0.75	0.55	0.50	0.45



Remuera Intermediate Arts Centre



Technical Specifications

Stock Sizes and Perforations:

12.5 x 1200 x 2400 mm sheets in M2F Micro 3 x 3 mm, Q2F Quadril 12 x 12 mm, G2F Globe 6 mm ø, 12.5 x 900 x 2400 mm sheets in Tangent T3L1, T3L2, 12.5 x 900 x 2700 Globe G1F Other perforation patterns available to indent.

Colour:

Plain paper face, requires painting in situ.

Fire Reaction:

Material group number: 1S, C/VM2 / ISO 5660.1, Suitable for fire exit way and all other sprinklered & non sprinklered buildings.

Installed Conditions:

Max 90% R/H at 30°C.

Limitation:

Not for use in direct contact with moisture or in extreme humidity conditions.

Loading:

Maximum weight that can be directly integrated into the ceiling eg: lighting, A/C grill, speakers etc, shall not exceed 3kg. Greater weights shall be independently supported.

Maintenance:

Clean with vacuum, soft brush or damp cloth.

NZ Building Code:

Clause B2—durability, 15 years

Weight:

9.2 kg/m²

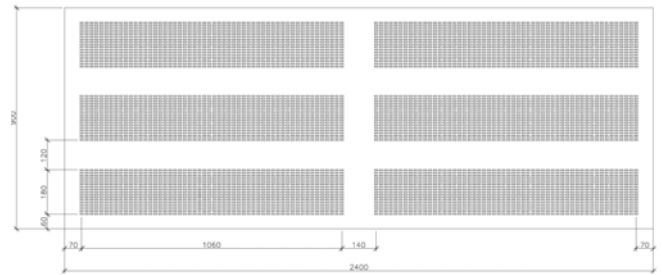
Installation:

Shall not commence until the building is water tight and dry. Install timber or metal furring at 300-450 mm centres, screw fix panels with 25mm bugle head gypsum screws at 200mm c/c along edges and 300mm c/c elsewhere, support butt end with furring to secure the join. Fill joins with 3 coat system and paper reinforcing tape, take care not to fill perforations. Overlay with 50 mm insulation if plenum is less than 200mm. Paint with fine nap roller. Do not spray paint.

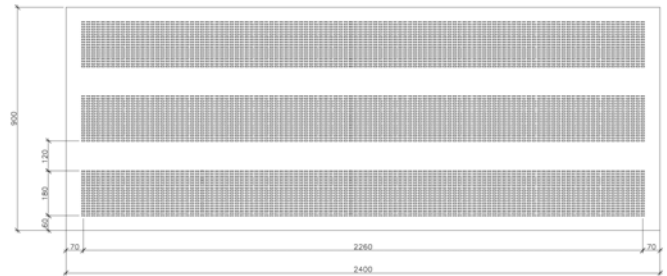
Specification:

Ceiling/ wall lining shall be Designpanel perforated plaster-board acoustical lining as supplied by Asona Ltd, Tel: 09 525 6575, Fax: 09 525 6579. Size 12.5 x 1200 x 2400 (M2F 3 x 3 mm square perforation at 8.33 mm c/c) (Q2F 12 x 12 mm square perforation at 30mm c/c) (G2F 6 mm Ø round perforation at 15mm c/c), (13 x 900 x 2400 T3L1 & T3L2 Tangent 4 x 14mm oval perforations at 10/20 mm c/c) press punched and back laminated with grey acoustic tissue, for cavities less than 200mm overlay with 50 mm insulation blanket, panels shall be screw fixed to furring at max. 450 mm c/c. Butt joints supported, expansion joints at max 10m centres, stop to level 4 and paint with fine nap roller.

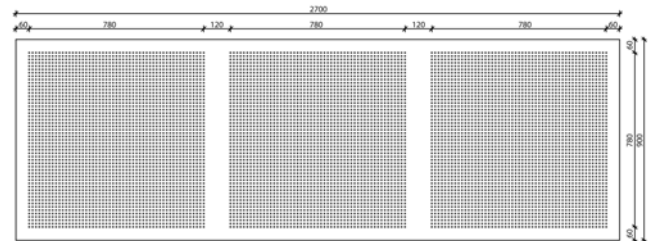
T3L2—900



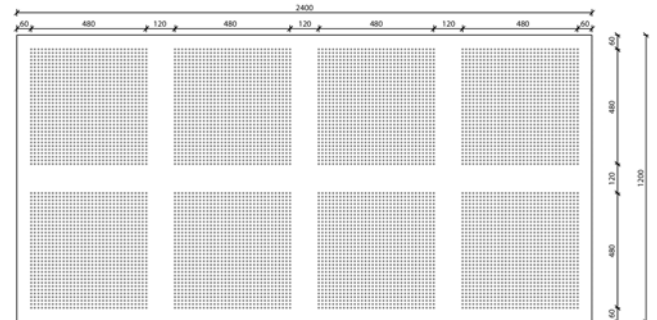
T3L1—900



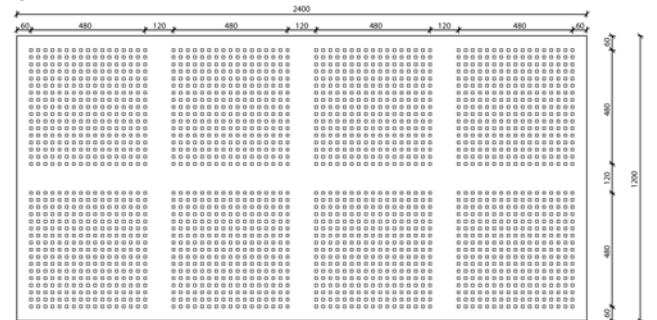
G1F—900



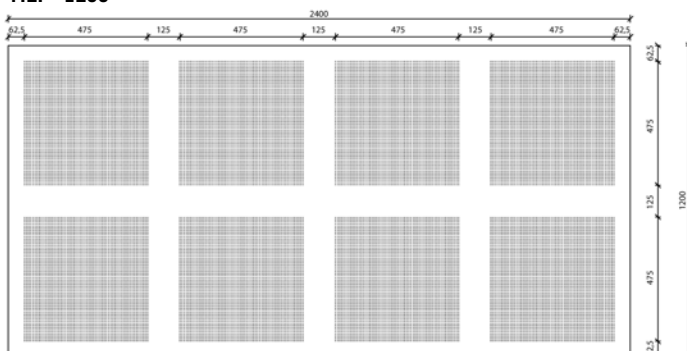
G2F-1200



Q2F—1200



M2F—1200



Asona Ltd

P.O Box 96-241 Balmoral,
Auckland, New Zealand
Sales: 09 525 6575
Email: info@asona.co.nz
Web: www.asona.co.nz

Factory:
Building 14, 7 Cain Road
Penrose
Auckland, New Zealand
Tel: (09) 525 6575
Fax: (09) 525 6579

© Copyright ASONA Ltd 2015
Asona, is a trade mark of Asona Ltd. Knauf-Danoline, Cleano Technology, Designpanel are all trademarks of Knauf Danoline SA, All dimensions are nominal. We reserve the right to change specifications without notice.
Ref. KD-DesignPanel—1504

Danopanel

Direct Fix Perforated Gypsum Acoustic Ceiling System

Technical Data sheet



asona

Description.

Danopanel™ is a durable non accessible pre painted direct fix perforated gypsum acoustic ceiling with 3 mm bevel butt joins. Proprietary fixing clips allow panels to be screw fixed to furring and overlap to support adjacent panel on two sides for a concealed monolithic finish.

Panels are available in Tangent 14 x 4mm oval, Micro 3 x 3 mm, Quadril 12 x 12 mm square and Globe 6 mm Ø acoustic perforations or non perforated Regula finish for perimeters. Now incorporated with an air purification feature, Cleaneo Technology across the full Knauf-Danoline range of perforated acoustic plasterboard ceiling & wall finishes.

Application.

Danopanel™ is ideal for direct fix ceiling applications where construction heights are restricted. Classrooms, schools halls, lobbies, residential and healthcare facilities.

Composition.

Panels manufactured from reinforced natural gypsum with latex paint finish, 8 x 40 x 40 x 1mm galvanised metal fixing clips and grey sound absorption felt fixed on the back.

Benefits.

- Attractive perforated aesthetic, pre painted white
- Proprietary direct fix clips, fast to install, saves costs.
- Durable fire resistant gypsum composition for long life
- Non mineral fibre based acoustic ceiling for health.

Technical Specifications

Perforation	% area	Size (nominal)
Tangent, 14 x 4 mm oval holes	21.3%	600 x 600 x 13mm
Micro, 3 x 3 mm square holes	10.2%	600 x 600 x 13mm
Quadril, 12x12mm square holes	13.0 %	600 x 600 x 13mm
Globe, 6 mm Ø round holes	10.2 %	600 x 600 x 13mm
Regula, non perforated.	0%	600 x 600 x 13mm

Sound Absorption Rating:

αW 0.65– 0.80 per ISO 354 E-200

	Hz	125	250	500	1000	2000	4000
Tangent T1	αp	0.40	0.65	0.85	0.75	0.75	0.80
Micro M1	αp	0.35	0.65	0.75	0.65	0.60	0.55
Quadril Q1	αp	0.35	0.65	0.75	0.65	0.60	0.45
Globe G1	αp	0.45	0.65	0.80	0.65	0.55	0.45
Regula R1	αp	0.40	0.20	0.10	0.05	0.05	0.00

Accessibility:

Non accessible system, hatches required.

Back loading:

Max 3 kg, greater loads shall be independently supported.

Colour:

Mat white.

Fire Reaction:

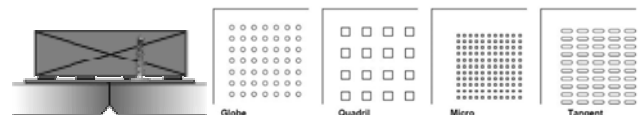
C/VM2 / ISO 5660.1, Group number 1S

Installed Conditions:

Max 90% R/H at 30°C.

Light reflectance:

ASTM C1477 LR-1, >75% White



Limitation:

Not for use with negative air return plenums, in direct contact with water or in extreme humidity conditions.

Maintenance:

Clean with vacuum, soft brush or damp cloth.

NZ Building Code:

Clause B2—durability, 5 years

Weight:

Perforated: 8.4 kg/m², plain regula: 9.4 kg/m²

Installation:

Shall not commence until the building is water tight and dry. Install furring at 300 mm centres. Screw fix panels to furring via fixing clips at rear of panel.

Specification:

Ceiling system shall be Danopanel perforated gypsum acoustical ceiling system as supplied by Asona Ltd, tel: 09 525 6575, fax: 09 525 6579, perforation pattern shall be (Tangent 14 x 4mm) (Micro M1 3 x 3 mm) (Quadril Q1 12 x 12 mm) (Globe G1 6 mm diameter) (Regula non perforated) sound absorption (αW 0.65)(αW 0.80 Tangent), prefinished mat white, screw fix panels to furring at 300 mm centres.

For further information: www.knaufdanoline.com

Asona Ltd

P.O Box 96-241 Balmoral,
Auckland, New Zealand
Sales: 09 525 6575
Email: info@asona.co.nz
Web: www.asona.co.nz

Factory:
Building 14, 7 Cain Road
Penrose
Auckland, New Zealand
Tel: 09 525 6575
Fax: 09 525 6579

© Copyright ASONA Ltd 2015
Asona, is a trade mark of Asona Ltd, Knauf-Danoline, Cleaneo, Danopanel are trademarks of Knauf Danoline S.A DK. All dimensions are nominal. We reserve the right to change specifications without notice.
Ref. Danopanel 1504